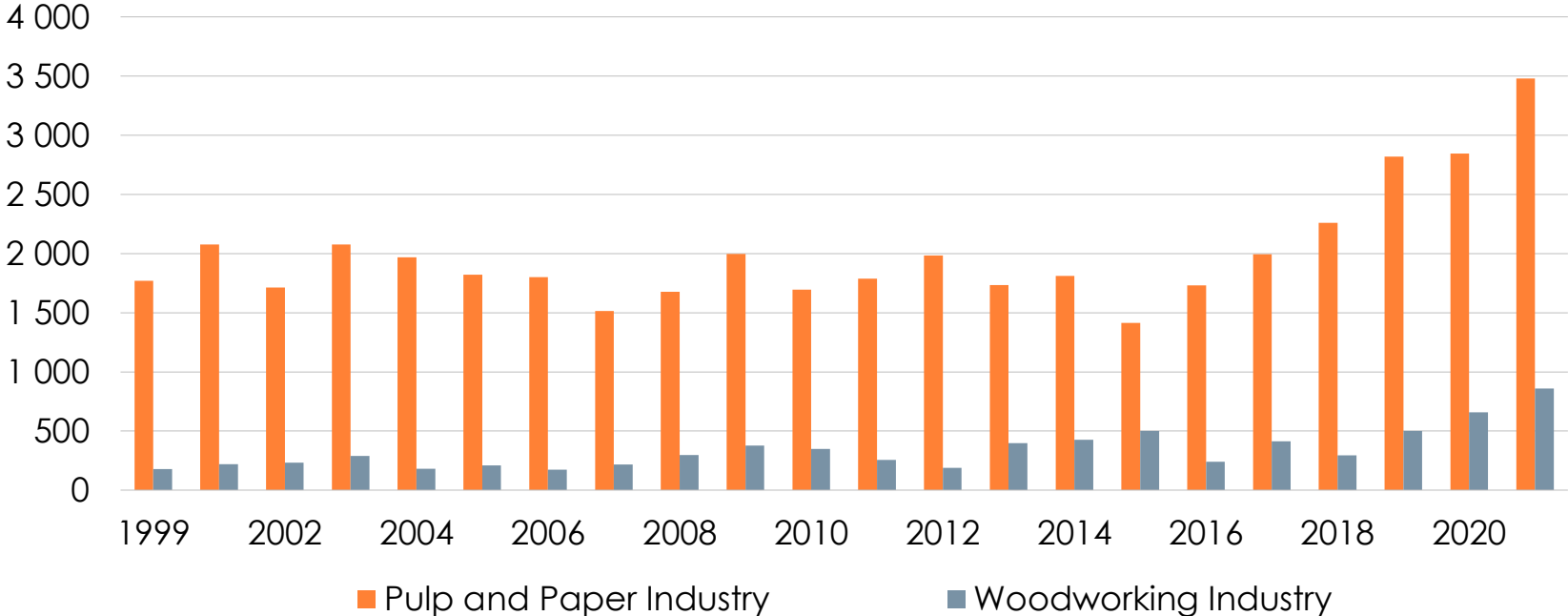


Expenditure on Environmental Measures 1999-2021

Swedish Pulp and Paper Industry and Woodworking Industry*

Million SEK Operating Costs and Capital Expenditure



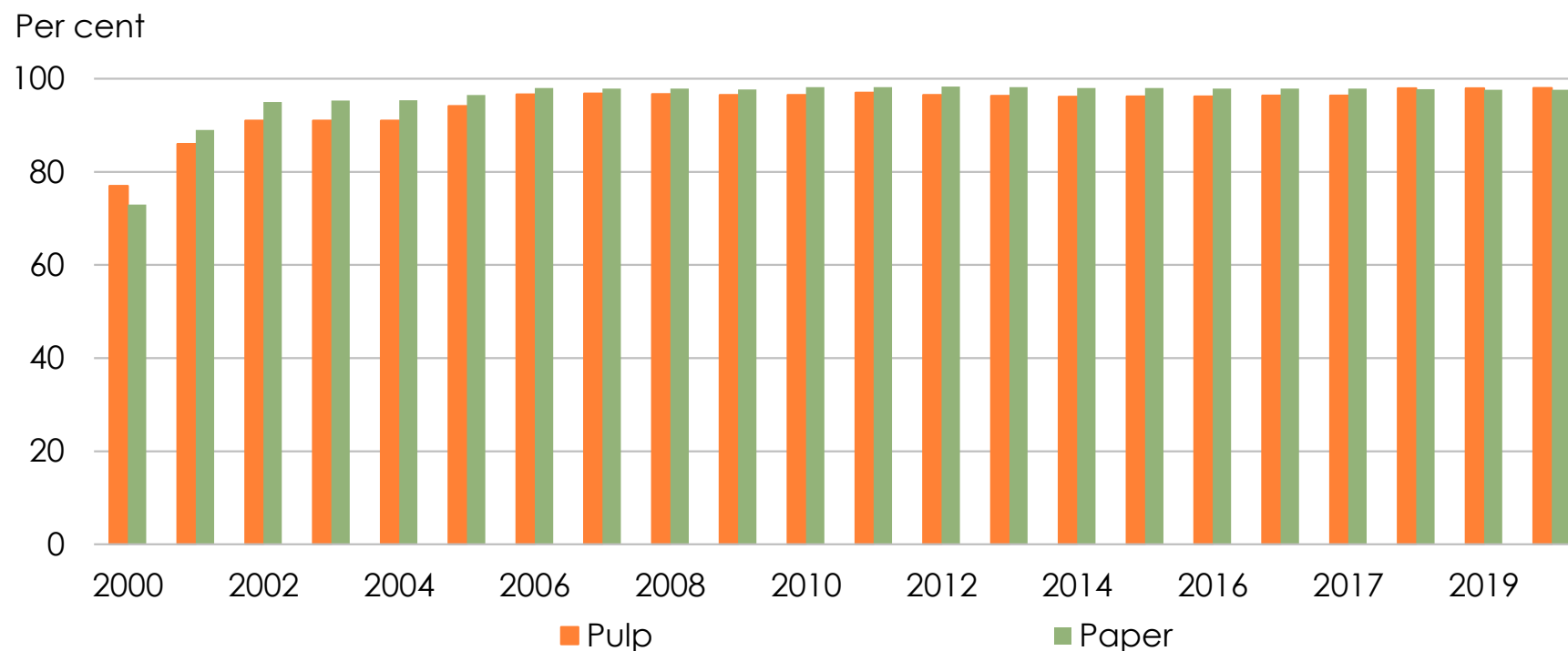
*Sawmills and Other Segments of the Timber Industry

Source: Statistics Sweden



Certified Environmental Management Systems (EMS) 2000-2021

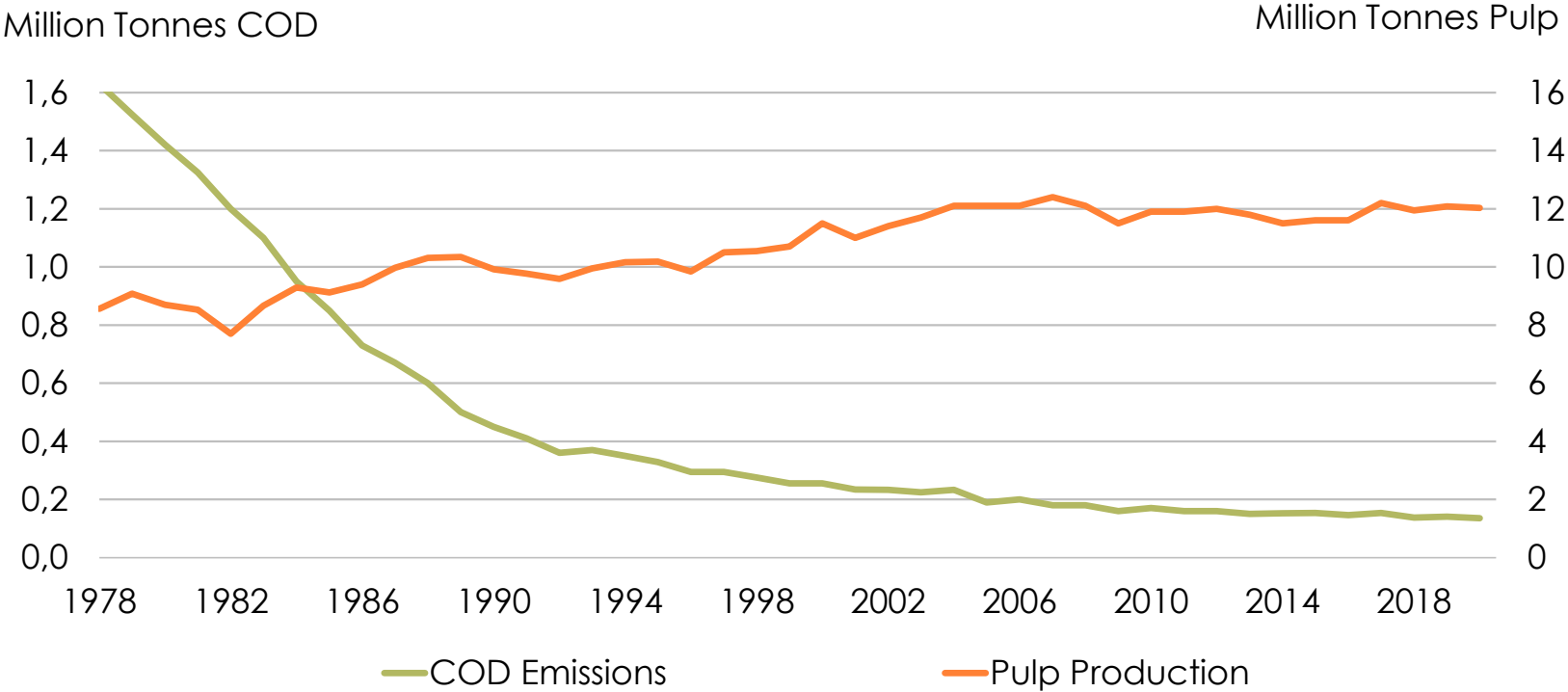
Share of Swedish Pulp, Paper and Sawn Timber Production



Source: Swedish Forest Industries Federation

Dissolved Organic Substances (COD) 1978-2021

From Swedish Pulp and Paper Mills

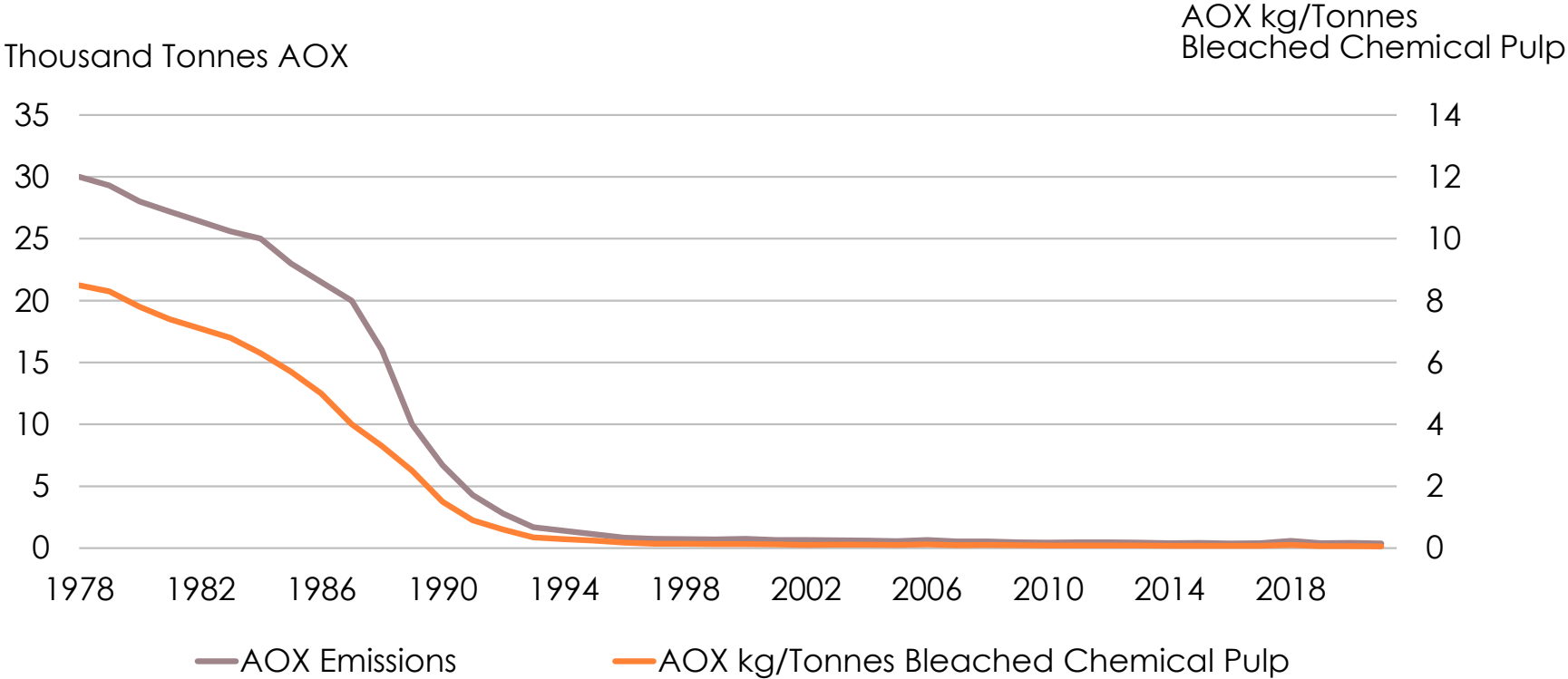


Source: Swedish Forest Industries Federation



Chlorinated Organic Substances (AOX) 1978-2021

Emissions from Swedish Pulp and Paper Mills

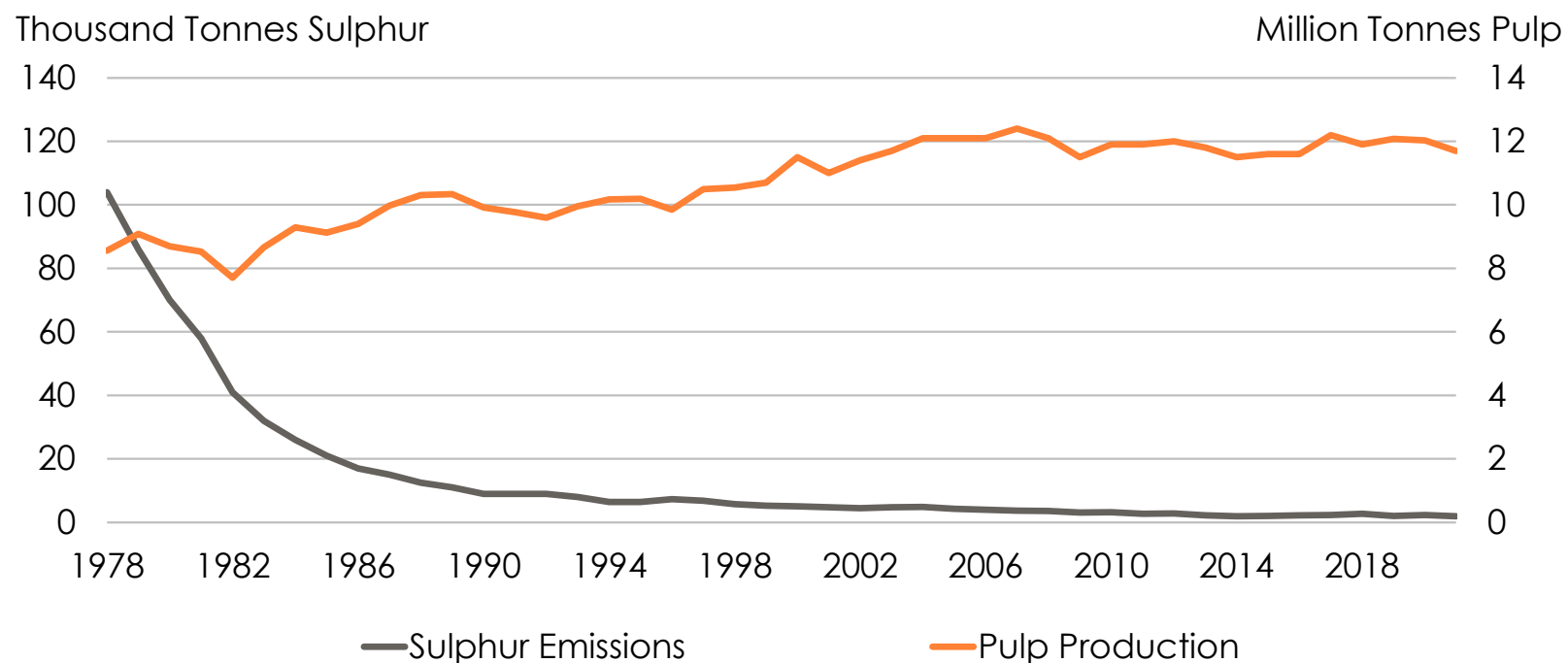


Source: Swedish Forest Industries Federation



Sulphur Emissions 1978-2021

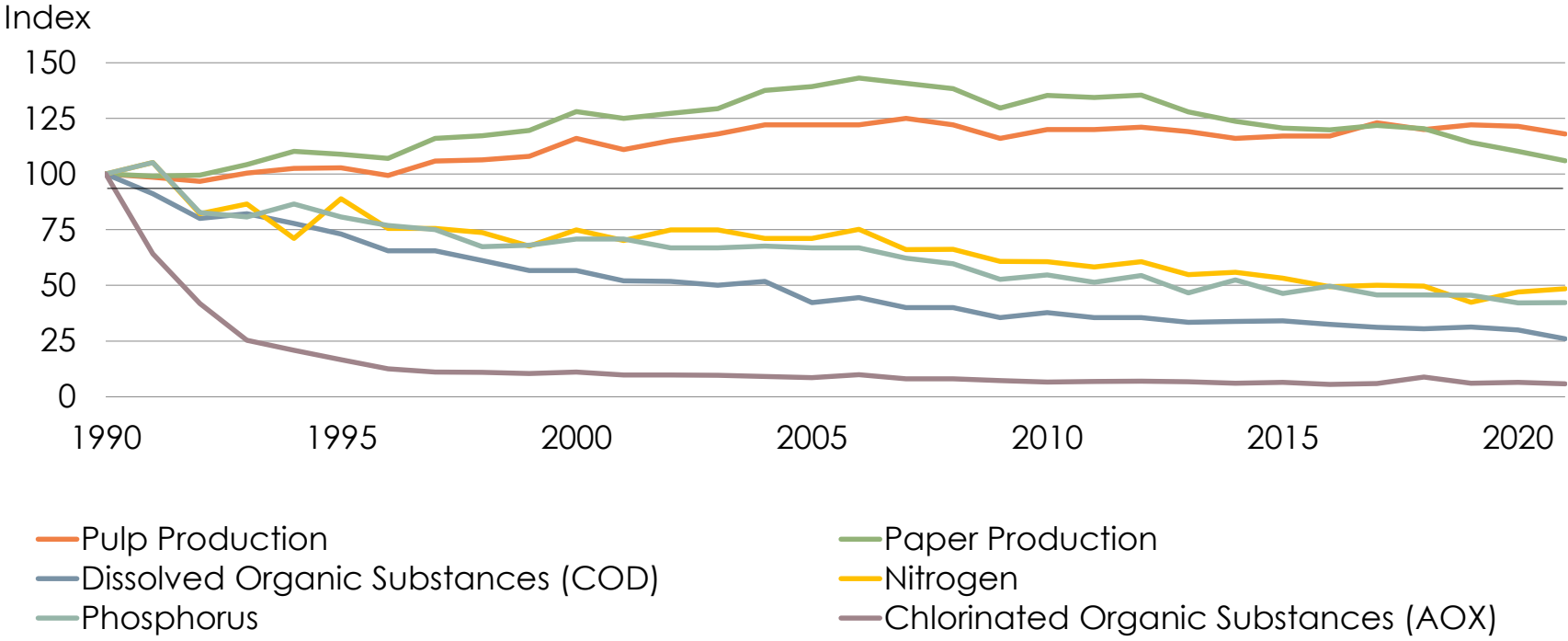
From Swedish Pulp and Paper Mills



Source: Swedish Forest Industries Federation

Higher production and lower emissions to water

Pulp and Paper Mills 1990-2021

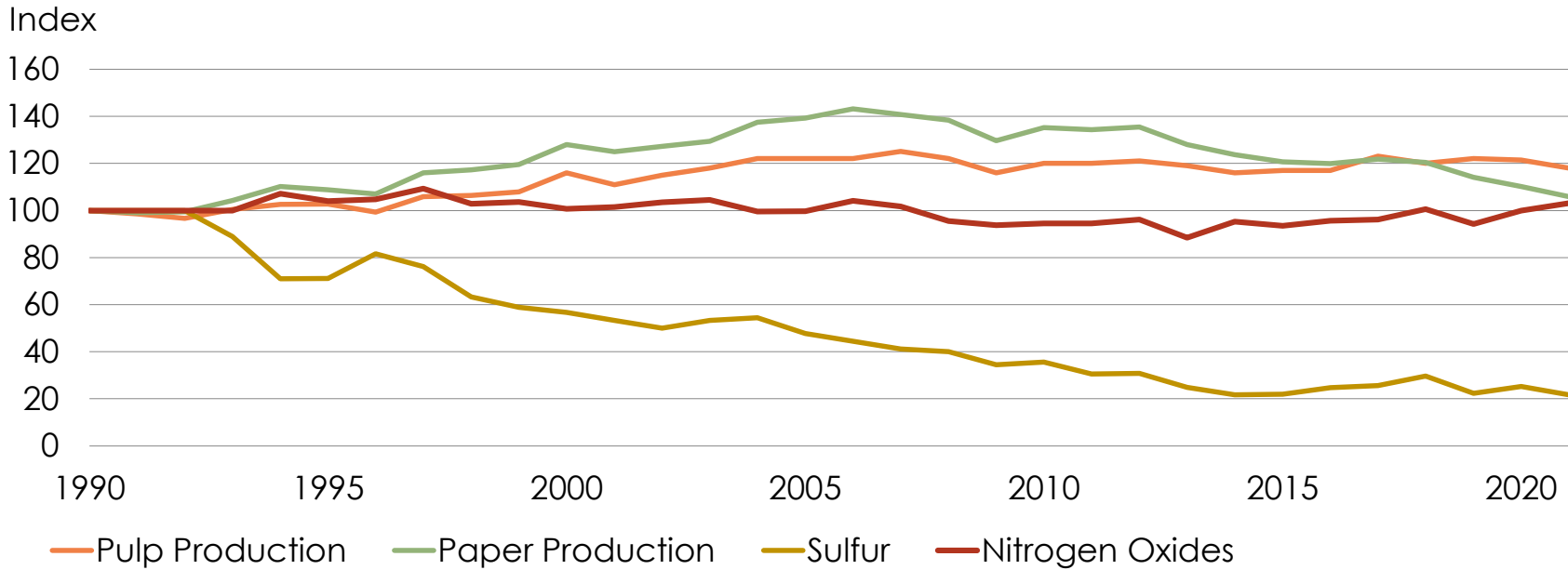


Source: Swedish Forest Industries Federation



Higher production and lower emissions to air

Pulp and Paper Mills 1990-2021



Source: Swedish Forest Industries Federation

